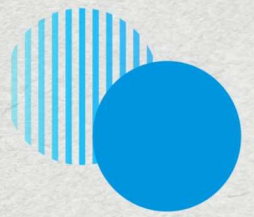




Smart Mobility
To Achieve
a Better World

KYNAMIC



Feb. 27, 2025

Product Manual

Kynamic Triton Battery Extender

Outline

1. Instruction
2. Product Spec
3. LED/Button Behavior
4. Installation Guide
5. Charging instructions
6. Warnings

Instruction

Thank you for choosing Kynamic Triton Battery Extender for your e-bike.
Please read this manual carefully and keep it in a safe place to understand the operation, safety warnings, and installation guidelines of this product.
Failure to fully understand the instructions may result in serious injury or death.
Product specifications may change without prior notice.

- **Applicability:**

This manual is applicable to the Kynamic Triton Battery Extender, which is compatible only with the **eVO 250 (KY-BC250) System**.

- **Package Contents:**

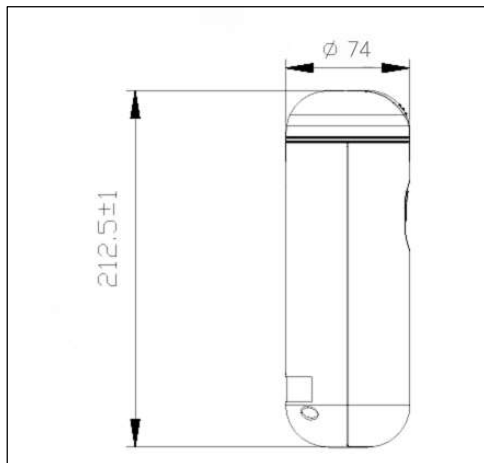
- Triton Battery Extender x1
- Bridge Cable x1



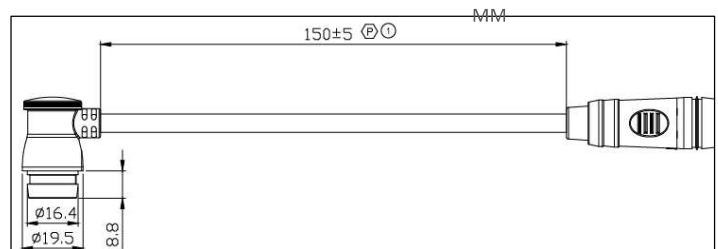
Product Spec

- Rechargeable Li-ion Battery
- Battery type: 10INR22/71-1
- Rated Voltage: 36.4V
- Nominal Capacity: 174.72Wh/ 4.8Ah
- Charge Voltage & Charging Current: 41.5V-2A/3A
- Nominal Continuous Discharge Current: 6A
- USB Type-C connector output: DC 5V/3A
- Manufacturer: Celxpert Energy Co., Ltd
- Made in Taiwan
- Dimensions: $\phi 74 \times 212.5\text{mm}$
- CAN BUS Interface
- Waterproof: IPX6
- Weight: $1.1 \pm 0.2 \text{ Kg}$
- Operating Temperature:
Discharge: $-20 \sim 60^\circ\text{C}$
Charge: $0 \sim 45^\circ\text{C}$
- Storage Temperature:
 $-20 \text{ to } 60^\circ\text{C}$ (within 1 month)
 $-20 \text{ to } 45^\circ\text{C}$ (within 3 months)
 $-20 \text{ to } 23^\circ\text{C}$ (within 1 year)
- During storage, the battery must be recharged to 60%~100% every 3months.

Product Spec

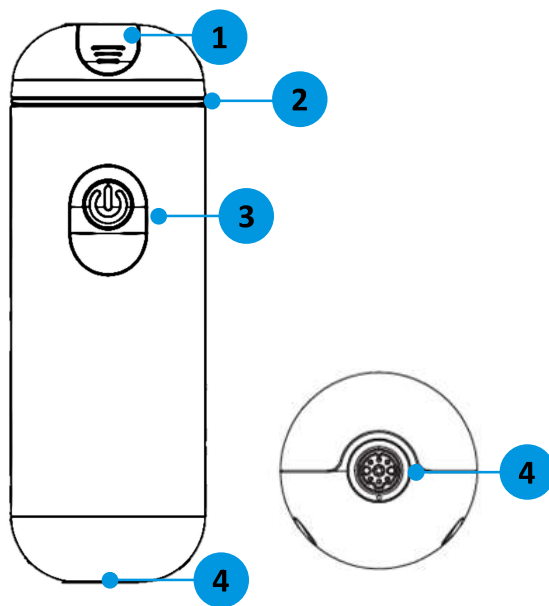


Triton Battery Extender



Bridge Cable

LED/Button Behavior



1. Type-C Port
2. LED Behavior
3. Capacity Button: Power on/off
4. Charging Port

Copyright © 2025 Kynamic Inc. All rights reserved.

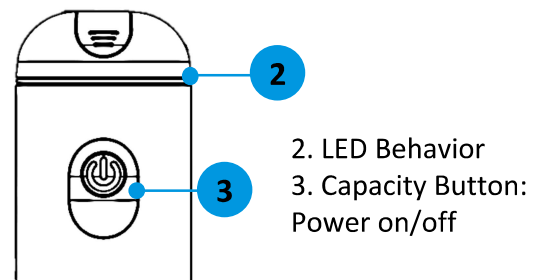
KYNAMIC

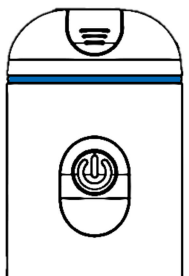
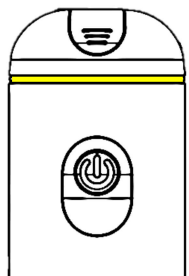
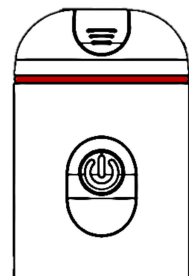
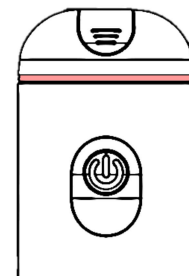
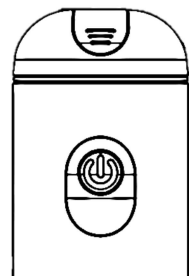
LED/Button Behavior

1. Battery Level Indication

Short press the capacity button.

- Press the capacity button less than 1 second when power on.
- The battery capacity LED indicator light will restore to previous state after three seconds.



				
Blue Static Light Battery Level : 95% ~ 100%	Yellow Static Light Battery Level : 21% ~ 94%	Red Static Light Battery Level : 11% ~ 20%	Red Blinking Battery Level : 0% ~ 10%	No Light Battery Level : 0% Power off

LED/Button Behavior

2. Charge Indication

- Green Blinking while charging current exist.

3. Turn On the Battery Pack

- Press the power button for more than 2 seconds, and the LED show static green light after power on.

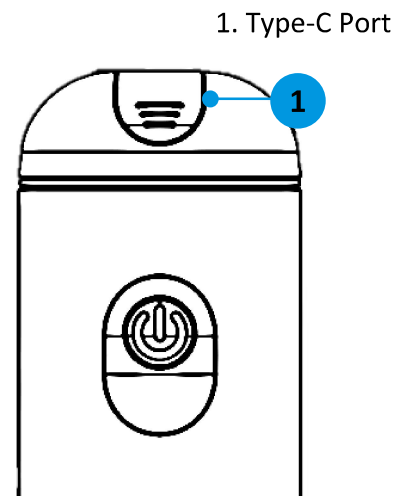
4. Shutdown the Battery Pack

- Press the power button for more than 2 seconds.
- When no communication for 60 seconds, the battery pack will automatically power off.
- When the battery pack going power off, LED RGB blinks twice.

LED/Button Behavior

5. Special function

- The battery extender is loaded with Type-C port, which can be charged with 3A current. You can charge your mobile device in the following situations:
 - When the battery extender is connected to the main battery on the bike.
 - When charging with the battery extender alone.
- While the charger is connected, the Type-C Port cannot use.

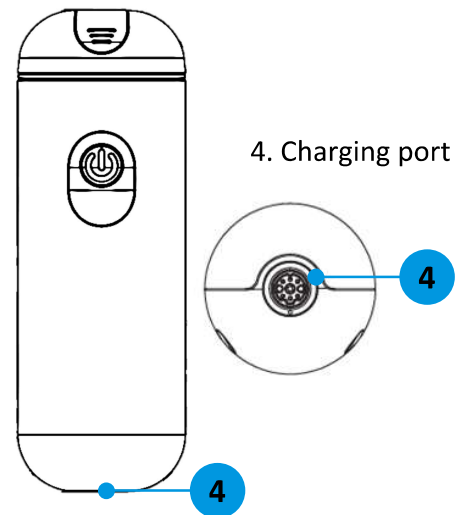


Charging instructions

1. Instruction

Please read the Warnings carefully before using the charger.

- The charger is not included in the Triton battery extender set; Please use the same charger as the main battery. Do not use chargers that are incompatible with the eVO 250(KY-BC250) system.
- Check your battery before using it for the first time. You must charge the battery for a few seconds to exit ship mode and enter operation mode.
 - * Note: While the battery is in shipping mode, pressing and holding the power button will not power on the battery. Instead, it will only flash the white light for a split second and then immediately return to the off state.
- The battery was only partially charged before shipment, to ensure that the battery has full and sufficient power, please charge your battery fully before using it for the first time.



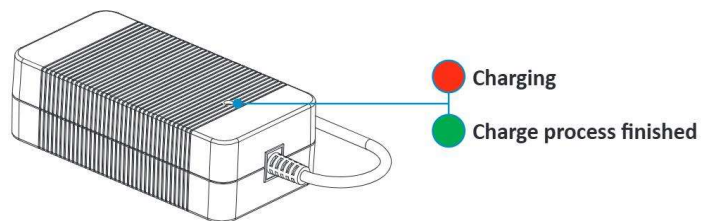
Charging instructions

2. Charging the Battery

- Plug the charger into an outlet (100-240V), using the appropriate plug by the country's standards.
- If the battery is out of capacity, charge it as soon as possible. If the battery is over-discharged, it may cause the battery to deteriorate and become unusable.

3. Indicator on charger

- During the charging process, the indicator on the charger will glow red.
- When the battery is fully charged, the indicator on the charger will turn green.

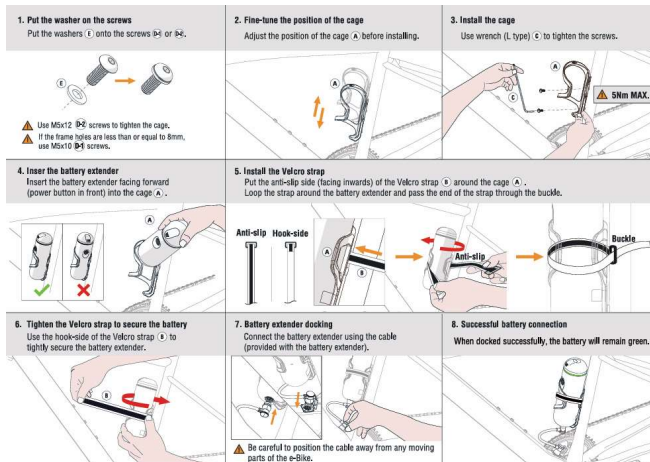


Installation Guide

Triton Battery Extender Cage Installation

The battery extender is assembled with the eVO 250(KY-BC250) Triton Battery Extender cage set.

- Battery extender cage user manual is included in the bottle cage box.
- Scan the QR code below for a quick guide video (also available in the battery extender cage user manual).



eVO 250(KY-BC250) Triton Battery Extender Cage Set



[Battery Extender Cage Quick Guide](#)

Warnings

Safety Precautions

1. Do not dismantle, open, or shred secondary cells or batteries.
2. Keep batteries out of the reach of children. Battery usage by children should be supervised. Especially keep small batteries out of reach of small children.
3. Seek medical advice immediately if a cell or a battery has been swallowed.
4. Do not expose cells or batteries to heat or fire. Avoid storage in direct sunlight.
5. Do not short-circuit a cell or a battery. Do not store cells or batteries haphazardly in a box or drawer where they may short-circuit each other or be short-circuited by other metal objects.
6. In the event of a cell leaking, do not allow the liquid to touch the skin or eyes. If contact has been made, wash the affected area with copious amounts of water and seek medical advice.
7. Do not subject cells or batteries to mechanical shock.
8. Dispose of the battery in accordance with local regulations.

Warnings

Usage and Charging

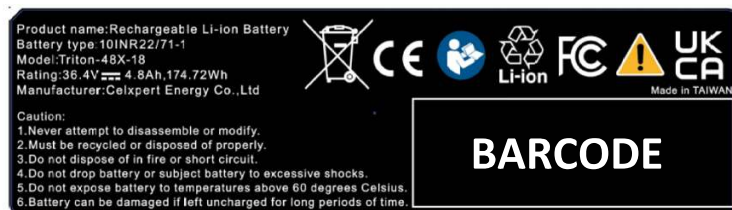
1. Do not remove a cell or battery from its original packaging until required for use.
2. Do not use any charger other than that specifically provided for use with the equipment.
3. Ensure correct use by observing the plus (+) and minus (-) marks on the cell, battery, and equipment.
4. Do not use any cell or battery that is not designed for use with the equipment.
5. Do not mix cells of different manufacture, capacity, size, or type within a device.
6. Always purchase the battery recommended by the device manufacturer for the equipment.
7. Secondary cells and batteries need to be charged before use. Always use the correct charger and refer to the manufacturer's instructions or equipment manual for proper charging instructions.
8. Do not leave a battery on prolonged charge when not in use.

Warnings

Maintenance and Storage

1. Keep cells and batteries clean and dry.
2. Wipe the cell or battery terminals with a clean, dry cloth if they become dirty.
3. When possible, remove the battery from the equipment when not in use.
4. Retain the original product literature for future reference.
5. Use the cell or battery only in the application for which it was intended.
6. After extended periods of storage, it may be necessary to charge and discharge the cells or batteries several times to obtain maximum performance


On the product warning label of the battery, you can find simple descriptions of safety warnings; the contents shown as the below label.



Kynamic Service

Kynamic EU Service

 EU_Service@kynamic-ebike.com


 +31 513 650690


 Businesspark Friesland-West 57,
8447 SL Heerenveen, Netherlands


Kynamic Inc. (HQ)

 <https://www.kynamic-ebike.com/>

 info@kynamic-ebike.com

 +886 4 23598810

 +886 4 23598610

 5F.-1, No. 859, Sec. 4, Taiwan Blvd., Xitun
Dist., Taichung City 40726, Taiwan (R.O.C.)

***KYNA*miC**